

# C6097A

## Pressure Switch

The C6097A gas pressure switch is used to detect the pressure of city gas, natural gas, LP gas, air, etc.

The switch performs ON/OFF control of an external electrical circuit in accordance with the set point. This switch has a wide range of uses, such as detecting the upper or lower limit pressure of gas or air to be supplied to a gas combustion system, or detecting a clogged interlock filter on a burner blower.



### Specifications

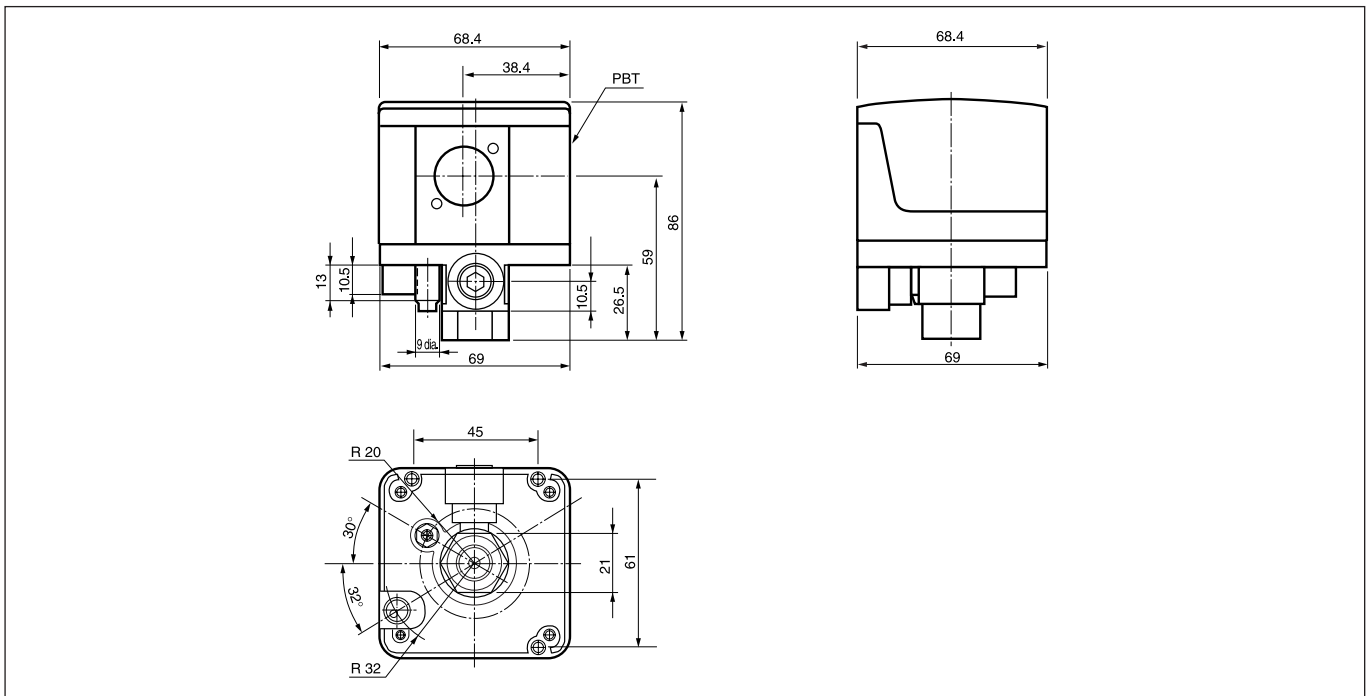
Applicable fluid	City gas, natural gas, LP gas and air
Output	SPDT contact output: Pressure drop: close between terminals 1 - 3, open between 2 - 3 Pressure increase: open between 1 - 3, close between 2 - 3
Contact rating	Resistive load: 250Vac 5A Inductive load: 250Vac 3A (power factor: 0.6) Minimum applicable voltage and current: 50mA, 24Vdc
Ambient temperature	-29 to +60°C (non-freezing and non-condensation)
Fluid temperature	-29 to +60°C (non-freezing and non-condensation)
Life	More than 100K cycles under the rated contact voltage and current
Wire connecting terminal	M3.5 screw terminal
Mounting	Vertical, or horizontal with the setting dial facing upward
Protection	IP54
Mass	260g
Material	Housing: aluminum die-cast Diaphragm: NBR
Accessory	Switch operation indicator for 100/200Vac: part No. 81404156

### Selection Guide

Model No.	C6097A0110	C6097A0210	C6097A0310	C6097A0410	C6097A0510
Control mode	ON/OFF	ON/OFF	ON/OFF	ON/OFF	ON/OFF
Setting range	0.1 to 1kPa	0.25 to 5kPa	3 to 15kPa	10 to 50kPa	10 to 70kPa
Differential	40Pa	60Pa	280Pa	700Pa	800Pa
Allowable pressure	20kPa	30kPa	50kPa	150kPa	150kPa
Setting accuracy	0.1 ± 0.06kPa, 1 ± 0.15kPa	0.25 ± 0.15kPa, 5 ± 0.75kPa	3 ± 0.9kPa, 15 ± 2.25kPa	10 ± 2.4kPa, 50 ± 7.5kPa	10 ± 3kPa, 50 ± 8kPa
	Low pressure side: for atmospheric air pressure High pressure side: for pressure increase				

### Dimensions

(Unit: mm)



MECHANICAL CONTROLLERS